

## TECHNICAL DATA

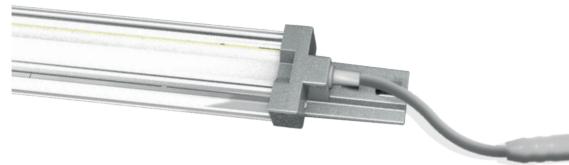
Power	34 - 38 W
Operating voltage	24 V DC
Type of luminaire	Light strip
LED Type	SMD
Control	PWM
Light efficiency	up to 100 lm/W
Colour consistency	SDCM3
Lifetime	L80 B10 60.000 h @ 10°C L80 B10 50.000 h @ 25°C
Ambient temperature	-30°C to +25°C
Material	Aluminium
Cascading	no
Warranty	5 Years



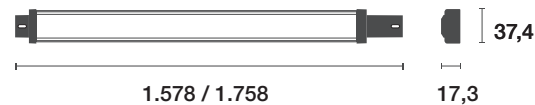
Further information on the control gear can be found in the installation instructions belonging to this product.



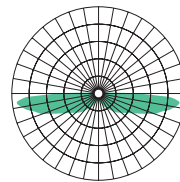
## TYPES



## DIMENSIONS (mm)



## BEAM ANGLE



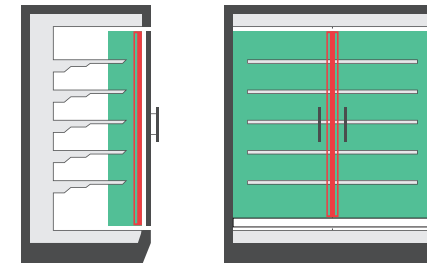
## HIGHLIGHTS

- cost effective retrofit system
- especially for refrigerated cabinets -30° to +25° (IP 44)
- Flexible integration with multiple accessories
- brilliant light with CRI 94
- Installation: via magnet or screw clip
- Splash water protected socket connectors (both sides)

## APPLICATIONS SCL-G2-VC

Attachment to the door web (left or right), for illumination of the goods front.

- Refrigerated multideck cabinet (closed)
- Freezer
- Combi Freezer



## STANDARDS SCL-SERIES

IEC 60598-1-2014

IEC 60598-1-2014/AMD1:2017

IEC 60598-2-1-2020

IEC 60335-1-2010

IEC 60335-1-2010/AMD1:2013

IEC 60335-1-2010/AMD2:2016

IEC 60335-2-89:2010

IEC 60335-2-89:2010/AMD1:2012

IEC 60335-2-89:2010/AMD2:2015

Item number	Productcode	Power	Light colour Ledxon	CRI	Luminous flux	Beam characteristic	Length	Weight
9100618	SCL-G2-L1500-930-VC	34 W	3000 K	94	3120 lm	Door ligament Center	1578 mm	0,90 kg
9100619	SCL-G2-L1500-940-VC	34 W	4000 K	94	3230 lm	Door ligament Center	1578 mm	0,90 kg
9100621	SCL-G2-L1500-957-VC	34 W	5700 K	94	3330 lm	Door ligament Center	1578 mm	0,90 kg
9100622	SCL-G2-L1500-FM-VC	34 W	Fresh meat	90	2450 lm	Door ligament Center	1578 mm	0,90 kg
9100623	SCL-G2-L1700-930-VC	38 W	3000 K	94	3500 lm	Door ligament Center	1758 mm	1,1 kg
9100624	SCL-G2-L1700-940-VC	38 W	4000 K	94	3610 lm	Door ligament Center	1758 mm	1,1 kg
9100625	SCL-G2-L1700-957-VC	38 W	5700 K	94	3720 lm	Door ligament Center	1758 mm	1,1 kg
9100626	SCL-G2-L1700-FM-VC	38 W	Fresh meat	90	2740 lm	Door ligament Center	1758 mm	1,1 kg

## TECHNICAL DATA

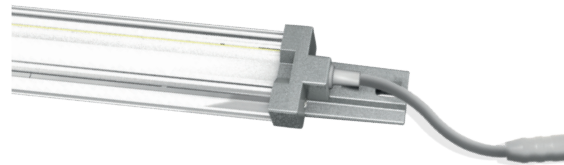
Power	34 - 38 W
Operating voltage	24 V DC
Type of luminaire	Light strip
LED Type	SMD
Control	Bluetooth
Light efficiency	up to 100 lm/W
Colour consistency	SDCM3
Lifetime	L80 B10 60.000 h @ 10°C L80 B10 50.000 h @ 25°C
Ambient temperature	-30°C to +25°C
Material	Aluminium
Cascading	no
Warranty	5 Years



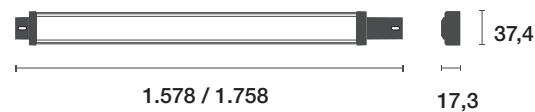
Further information on the control gear can be found in the installation instructions belonging to this product.



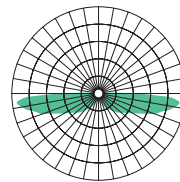
## TYPES



## DIMENSIONS (mm)



## BEAM ANGLE



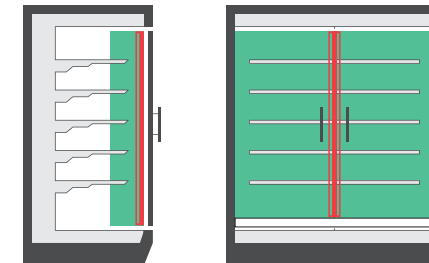
## HIGHLIGHTS

- no WLAN necessary
- Mesh-function
- timer
- group function
- scenes
- password protected
- no additional dimmer necessary

## APPLICATIONS SCL-G2-VC

Attachment to the door web (left or right), for illumination of the goods front.

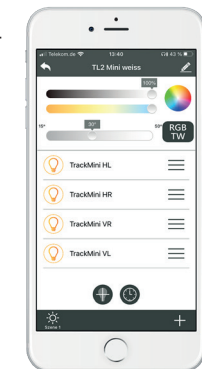
- Refrigerated multideck cabinet (closed)
- Freezer
- Combi Freezer



## LIGHTMANAGEMENT

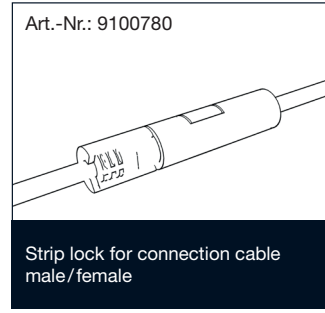
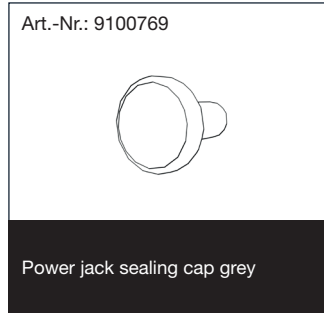
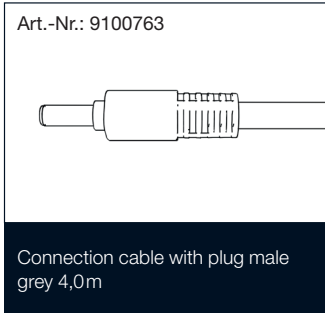
Download our App:  
**eyeconex LIGHTMANAGEMENT**

- lighting control via Bluetooth



Item number	Productcode	Power	Light colour Ledxon	CRI	Luminous flux	Beam characteristic	Length	Weight
9100636	SCL-G2-L1500-940-FM-VC-BT	34 W	4000 K - Fresh meat	94	3230 lm	Door ligament Center	1578 mm	0,90 kg
9100695	SCL-G2-L1500-927-957-VC-BT	34 W	2700 K - 5700 K	94	3330 lm	Door ligament Center	1578 mm	0,90 kg
9100696	SCL-G2-L1700-940-FM-VC-BT	38 W	4000 K - Fresh meat	94	3610 lm	Door ligament Center	1758 mm	1,1 kg
9100697	SCL-G2-L1700-927-957-VC-BT	38 W	2700 K - 5700 K	94	3720 lm	Door ligament Center	1758 mm	1,1 kg

## ACCESSORIES



itembezeichnung	Item number
Connection cable with plug male grey 4,0m (for LCR-SCL-SML)	9100763
Power jack sealing cap grey (for LCR-SCL-SML)	9100769
Strip lock for connection cable male/female set of 2 (for LCR-SCL-SML)	9100780

**IMPORTANT NOTES**

All technical parameters apply to the entire product. Due to the complex manufacturing process of light emitting diodes, the specified typical LED parameters are only purely statistical values and may deviate.

The specified type of use must be strictly adhered to. Deviations may affect the stability of the fixture. Please observe the information in the mounting instructions before using the products.

<b>Mercury content</b>	0,0 mg
<b>Mercury-free</b>	yes
<b>Professional disposal according to WEEE</b>	yes

**NOTES TO THE LIFE TIME**

Decisive factors for the life time are the ambient temperature and the operating temperature (T<sub>c</sub>). Exceeding the permissible limits results in a substantial reduction of the life time and can even lead to the destruction of the products. The specified life time represents a statistical quantity.

**NOTES TO ELECTRICAL AND PHOTOMETRIC DATA**

Colour coordinates according to CIE 1931

Rated ambient temperature:  $t_a = 25^\circ$

Measuring tolerance colour coordinates (x/y) +/- 0,005

Tolerance range of electrical / photometric data: +/- 10%

**DISCLAIMER**

Changes and errors excepted. Due to the continuous development of all products, technical and design changes can occur at any time. Make sure that you always use the latest version of the data sheet.

**WARRANTY NOTES**

Please refer to our warranty conditions on:

<https://www.ledxon.de/en/guarantee/>

**Further product data as well as current information can be found at [www.ledxon.com](http://www.ledxon.com)**

**5 YEARS**  
WARRANTY

