

TECHNICAL DATA

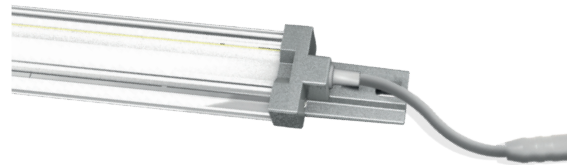
Power	17 - 19 W
Operating voltage	24 V DC
Type of luminaire	Light strip
LED Type	SMD
Control	PWM
Light efficiency	up to 100 lm/W
Colour consistency	SDCM3
Lifetime	L80 B10 60.000 h @ 10°C L80 B10 50.000 h @ 25°C
Ambient temperature	-30°C to +25°C
Material	Aluminium
Cascading	no
Warranty	5 Years



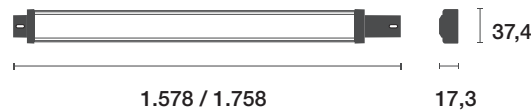
Further information on the control gear can be found in the installation instructions belonging to this product.



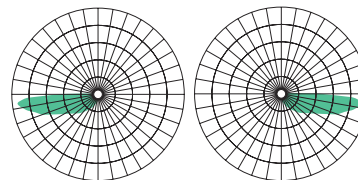
TYPES



ABMESSUNGEN (mm)



BEAM ANGLE



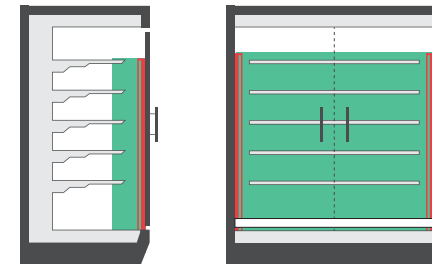
HIGHLIGHTS

- cost effective retrofit system
- especially for refrigerated cabinets -30° to +25° (IP 44)
- Flexible integration with multiple accessories
- brilliant light with CRI 94
- Installation: via magnet or screw clip
- Splash water protected socket connectors (both sides)

APPLICATIONS SCL-G2-VLR

Mounting in the furniture head, for illumination of the upper shelves.

- Refrigerated multideck cabinet (open / closed)
- Freezer
- Combi Freezer



STANDARDS SCL-SERIES

IEC 60598-1-2014

IEC 60598-1-2014/AMD1:2017

IEC 60598-2-1-2020

IEC 60335-1-2010

IEC 60335-1-2010/AMD1:2013

IEC 60335-1-2010/AMD2:2016

IEC 60335-2-89:2010

IEC 60335-2-89:2010/AMD1:2012

IEC 60335-2-89:2010/AMD2:2015

Item number	Productcode	Power	Light colour Ledxon	CRI	Luminous flux	Beam characteristic	Length	Weight
9100610	SCL-G2-L1500-930-VLR	17 W	3000 K	94	1564 lm	Door ligament right / left	1578 mm	0,85 kg
9100611	SCL-G2-L1500-940-VLR	17 W	4000 K	94	1620 lm	Door ligament right / left	1578 mm	0,85 kg
9100612	SCL-G2-L1500-957-VLR	17 W	5700 K	94	1666 lm	Door ligament right / left	1578 mm	0,85 kg
9100613	SCL-G2-L1500-FM-VLR	17 W	Fresh meat	90	1250 lm	Door ligament right / left	1578 mm	0,85 kg
9100614	SCL-G2-L1700-930-VLR	19 W	3000 K	94	1780 lm	Door ligament right / left	1758 mm	0,96 kg
9100615	SCL-G2-L1700-940-VLR	19 W	4000 K	94	1805 lm	Door ligament right / left	1758 mm	0,96 kg
9100616	SCL-G2-L1700-957-VLR	19 W	5700 K	94	1860 lm	Door ligament right / left	1758 mm	0,96 kg
9100617	SCL-G2-L1700-FM-VLR	19 W	Fresh meat	90	1368 lm	Door ligament right / left	1758 mm	0,96 kg

TECHNICAL DATA

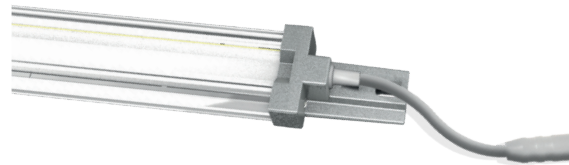
Power	17 - 19 W
Operating voltage	24 V DC
Type of luminaire	Light strip
LED Type	SMD
Control	Bluetooth
Light efficiency	up to 100 lm/W
Colour consistency	SDCM3
Lifetime	L80 B10 60.000 h @ 10°C L80 B10 50.000 h @ 25°C
Ambient temperature	-30°C to +25°C
Material	Aluminium
Cascading	no
Warranty	5 Years



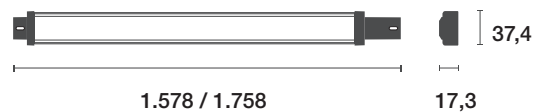
Further information on the control gear can be found in the installation instructions belonging to this product.



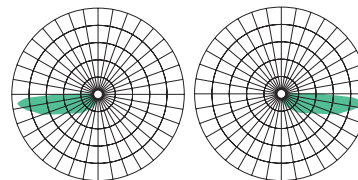
TYPES



DIMENSIONS (mm)



BEAM ANGLE



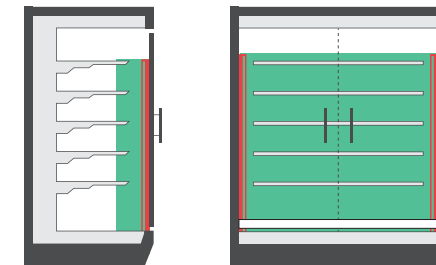
HIGHLIGHTS

- no WLAN necessary
- Mesh-function
- timer
- group function
- scenes
- password protected
- no additional dimmer necessary

APPLICATIONS SCL-G2-VLR

Mounting in the furniture head, for illumination of the upper shelves.

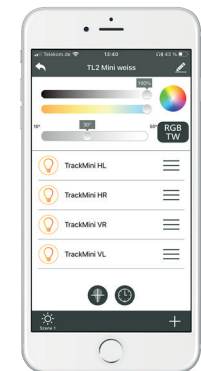
- Refrigerated multideck cabinet (open / closed)
- Freezer
- Combi Freezer



LIGHTMANAGEMENT

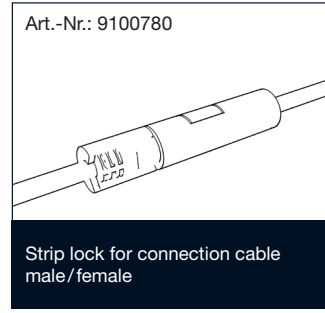
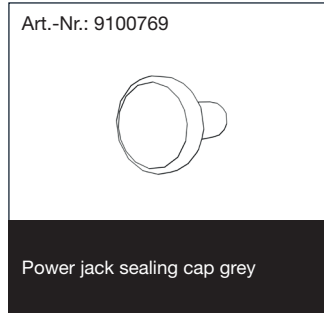
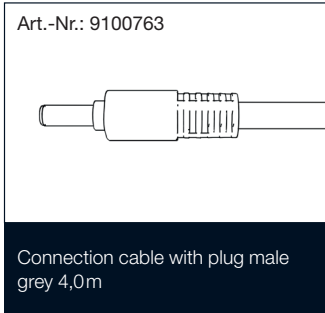
Download our App:
eyeconex LIGHTMANAGEMENT

- lighting control via Bluetooth



Item number	Productcode	Power	Light colour Ledxon	CRI	Luminous flux	Beam characteristic	Length	Weight
9100628	SCL-G2-L1500-940-FM-VLR-BT	17 W	4000 K - Fresh meat	94	1620 lm	Door ligament right / left	1578 mm	0,85 kg
9100629	SCL-G2-L1500-927-957-VLR-BT	17 W	2700 K - 5700 K	94	1666 lm	Door ligament right / left	1578 mm	0,85 kg
9100631	SCL-G2-L1700-940-FM-VLR-BT	19 W	4000 K - Fresh meat	94	1805 lm	Door ligament right / left	1758 mm	0,96 kg
9100633	SCL-G2-L1700-927-957-VLR-BT	19 W	2700 K - 5700 K	94	1860 lm	Door ligament right / left	1758 mm	0,96 kg

ACCESSORIES



itembezeichnung	Item number
Connection cable with plug male grey 4,0m (for LCR-SCL-SML)	9100763
Power jack sealing cap grey (for LCR-SCL-SML)	9100769
Strip lock for connection cable male/female set of 2 (for LCR-SCL-SML)	9100780

IMPORTANT NOTES

All technical parameters apply to the entire product. Due to the complex manufacturing process of light emitting diodes, the specified typical LED parameters are only purely statistical values and may deviate.

The specified type of use must be strictly adhered to. Deviations may affect the stability of the fixture. Please observe the information in the mounting instructions before using the products.

Mercury content	0,0 mg
Mercury-free	yes
Professional disposal according to WEEE	yes

NOTES TO THE LIFE TIME

Decisive factors for the life time are the ambient temperature and the operating temperature (T_c). Exceeding the permissible limits results in a substantial reduction of the life time and can even lead to the destruction of the products. The specified life time represents a statistical quantity.

NOTES TO ELECTRICAL AND PHOTOMETRIC DATA

Colour coordinates according to CIE 1931

Rated ambient temperature: $t_a = 25^\circ$

Measuring tolerance colour coordinates (x/y) +/- 0,005

Tolerance range of electrical / photometric data: +/- 10%

DISCLAIMER

Changes and errors excepted. Due to the continuous development of all products, technical and design changes can occur at any time. Make sure that you always use the latest version of the data sheet.

WARRANTY NOTES

Please refer to our warranty conditions on:

<https://www.ledxon.de/en/guarantee/>

Further product data as well as current information can be found at www.ledxon.com

5 YEARS
WARRANTY

