

TECHNICAL DATA

Power	15 - 73 W
Operating voltage	230 V AC / 50 Hz
Type of luminaire	Surface mounted luminaire / Phase track
LED Type	SMD
Control	Standard or Bluetooth
Luminous flux class	2.000 - 11.000 lm
Light efficiency	up to 148 lm/W
Colour consistency	3 SDCM
Lifetime	L80 B10 50.000 h @ 25°C
Housing	Stahlblech powder coated
Cooling	Passiv cooling
Weight	L600 S=1,2 kg, BT=1,4 kg L900 S=1,7 kg, BT=1,9 kg L1800 S=3,2 kg, BT=3,4 kg
Warranty	5 Years



5 YEARS
WARRANTY

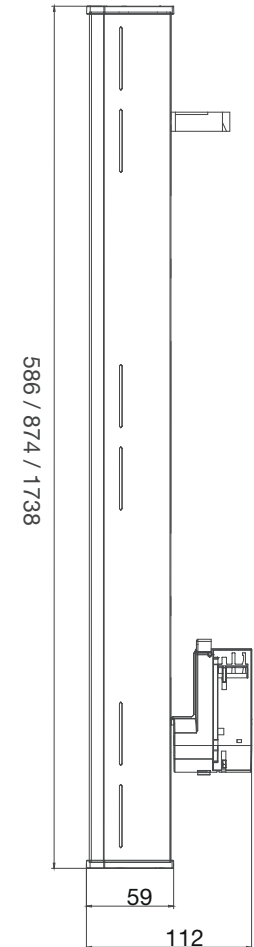
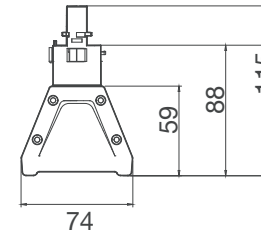


Further information on the control gear can be found in the operating instructions belonging to this product.

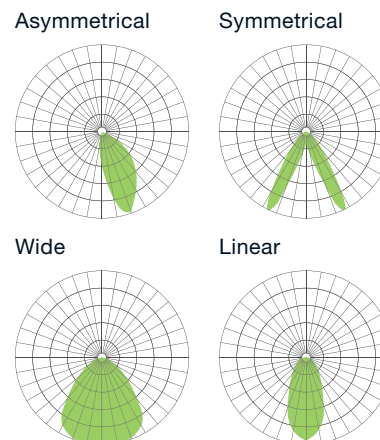
TYPES



DIMENSIONS (mm)



BEAM ANGLE



[Product link](#)

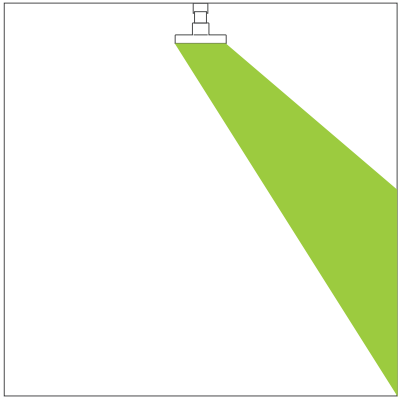
ARTICLEOVERVIEW

Product	Power	Light colour	CRI	Luminous flux	Beam angle	Housing-colour	Length	Item number Bluetooth
TB1-BT	26 W	3.000 K	90	2.900 lm	Wide	Black	586 mm	8101783
TB1-BT	26 W	4.000 K	90	3.100 lm	Wide	Black	586 mm	8101784
TB1-BT	26 W	3.000 K	90	2.900 lm	Wide	White	586 mm	8101785
TB1-BT	26 W	4.000 K	90	3.100 lm	Wide	White	586 mm	8101786
TB1-BT	26 W	3.000 K	90	3.000 lm	Sym	Black	586 mm	8101787
TB1-BT	26 W	4.000 K	90	3.200 lm	Sym	Black	586 mm	8101788
TB1-BT	26 W	3.000 K	90	3.000 lm	Sym	White	586 mm	8101789
TB1-BT	26 W	4.000 K	90	3.200 lm	Sym	White	586 mm	8101790
TB1-BT	26 W	3.000 K	80	3.400 lm	Linear	Black	586 mm	8101791
TB1-BT	26 W	4.000 K	80	3.700 lm	Linear	Black	586 mm	8101792
TB1-BT	26 W	3.000 K	80	3.400 lm	Linear	White	586 mm	8101793
TB1-BT	26 W	4.000 K	80	3.700 lm	Linear	White	586 mm	8101794
TB1-BT	26 W	3.000 K	90	3.000 lm	Linear	Black	586 mm	8101795
TB1-BT	26 W	4.000 K	90	3.200 lm	Linear	Black	586 mm	8101796
TB1-BT	26 W	3.000 K	90	3.000 lm	Linear	White	586 mm	8101797
TB1-BT	26 W	4.000 K	90	3.200 lm	Linear	White	586 mm	8101798
TB1-BT	15 W	3.000 K	90	1.700 lm	Asym	Black	586 mm	8101799
TB1-BT	15 W	4.000 K	90	1.800 lm	Asym	Black	586 mm	8101800

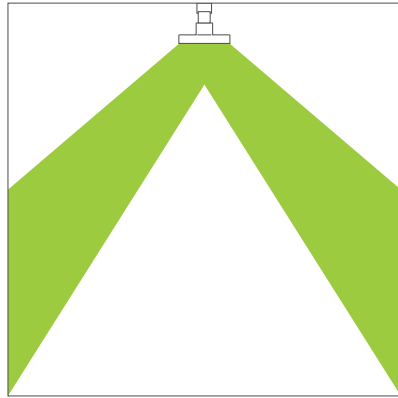
TB1-BT	15 W	3.000 K	90	1.700 lm	Asym	White	586 mm	8101801
TB1-BT	15 W	4.000 K	90	1.800 lm	Asym	White	586 mm	8101802
TB1-BT	37 W	3.000 K	90	4.200 lm	Wide	Black	874 mm	8101803
TB1-BT	37 W	4.000 K	90	4.500 lm	Wide	Black	874 mm	8101804
TB1-BT	37 W	3.000 K	90	4.200 lm	Wide	White	874 mm	8101805
TB1-BT	37 W	4.000 K	90	4.500 lm	Wide	White	874 mm	8101806
TB1-BT	37 W	3.000 K	90	4.500 lm	Sym	Black	874 mm	8101807
TB1-BT	37 W	4.000 K	90	4.800 lm	Sym	Black	874 mm	8101808
TB1-BT	37 W	3.000 K	90	4.500 lm	Sym	White	874 mm	8101809
TB1-BT	37 W	4.000 K	90	4.800 lm	Sym	White	874 mm	8101810
TB1-BT	37 W	3.000 K	80	5.100 lm	Linear	Black	874 mm	8101811
TB1-BT	37 W	4.000 K	80	5.400 lm	Linear	Black	874 mm	8101812
TB1-BT	37 W	3.000 K	80	5.100 lm	Linear	White	874 mm	8101813
TB1-BT	37 W	4.000 K	80	5.400 lm	Linear	White	874 mm	8101814
TB1-BT	37 W	3.000 K	90	4.400 lm	Linear	Black	874 mm	8101815
TB1-BT	37 W	4.000 K	90	4.700 lm	Linear	Black	874 mm	8101816
TB1-BT	37 W	3.000 K	90	4.400 lm	Linear	White	874 mm	8101817
TB1-BT	37 W	4.000 K	90	4.700 lm	Linear	White	874 mm	8101818
TB1-BT	21 W	3.000 K	90	2.600 lm	Asym	Black	874 mm	8101819
TB1-BT	21 W	4.000 K	90	2.800 lm	Asym	Black	874 mm	8101820
TB1-BT	21 W	3.000 K	90	2.600 lm	Asym	White	874 mm	8101821
TB1-BT	21 W	4.000 K	90	2.800 lm	Asym	White	874 mm	8101822

TB1-BT	73 W	3.000 K	90	8.400 lm	Wide	Black	1738 mm	8101823
TB1-BT	73 W	4.000 K	90	9.000 lm	Wide	Black	1738 mm	8101824
TB1-BT	73 W	3.000 K	90	8.400 lm	Wide	White	1738 mm	8101825
TB1-BT	73 W	4.000 K	90	9.000 lm	Wide	White	1738 mm	8101826
TB1-BT	73 W	3.000 K	90	8.900 lm	Sym	Black	1738 mm	8101827
TB1-BT	73 W	4.000 K	90	9.500 lm	Sym	Black	1738 mm	8101828
TB1-BT	73 W	3.000 K	90	8.900 lm	Sym	White	1738 mm	8101829
TB1-BT	73 W	4.000 K	90	9.500 lm	Sym	White	1738 mm	8101830
TB1-BT	73 W	3.000 K	80	10.100 lm	Linear	Black	1738 mm	8101831
TB1-BT	73 W	4.000 K	80	10.800 lm	Linear	Black	1738 mm	8101832
TB1-BT	73 W	3.000 K	80	10.100 lm	Linear	White	1738 mm	8101833
TB1-BT	73 W	4.000 K	80	10.800 lm	Linear	White	1738 mm	8101834
TB1-BT	73 W	3.000 K	90	8.500 lm	Linear	Black	1738 mm	8101835
TB1-BT	73 W	4.000 K	90	9.200 lm	Linear	Black	1738 mm	8101836
TB1-BT	73 W	3.000 K	90	8.500 lm	Linear	White	1738 mm	8101837
TB1-BT	73 W	4.000 K	90	9.200 lm	Linear	White	1738 mm	8101838
TB1-BT	42 W	3.000 K	90	5.200 lm	Asym	Black	1738 mm	8101839
TB1-BT	42 W	4.000 K	90	5.600 lm	Asym	Black	1738 mm	8101840
TB1-BT	42 W	3.000 K	90	5.200 lm	Asym	White	1738 mm	8101841
TB1-BT	42 W	4.000 K	90	5.600 lm	Asym	White	1738 mm	8101842

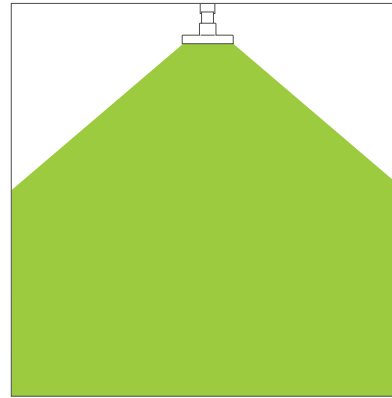
ASYMMETRICAL



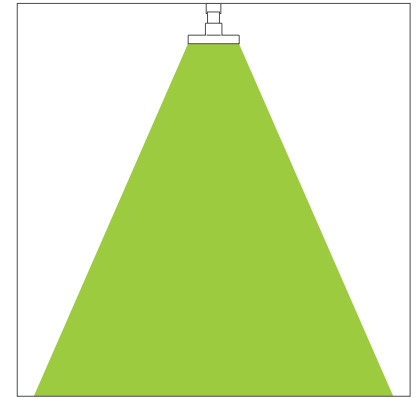
SYMMETRICAL



WIDE



LINEAR



IMPORTANT NOTES

All technical parameters apply to the entire product. Due to the complex manufacturing process of light emitting diodes, the specified typical LED parameters are only purely statistical values and may deviate.

The specified type of use must be strictly adhered to. Deviations may affect the stability of the fixture. Please observe the information in the mounting instructions before using the products.

The specified type of use must be observed. Deviations may affect the stability of the fastening. Before using the products, please observe the notes in the installation instructions.

Mercury content	0,0 mg
Mercury-free	yes
Professional disposal according to WEEE	yes

NOTES TO THE LIFE TIME

Decisive factors for the life time are the ambient temperature and the operating temperature (Tc). Exceeding the permissible limits results in a substantial reduction of the life time and can even lead to the destruction of the products. The specified life time represents a statistical quantity.

NOTES TO ELECTRICAL AND PHOTOMETRIC DATA

Colour coordinates according to CIE 1931

Rated ambient temperature: $t_a = 25^\circ$

Measuring tolerance colour coordinates (x/y) +/- 0,005

Tolerance range of electrical / photometric data: +/- 10%

DISCLAIMER

Changes and errors excepted. Due to the continuous development of all products, technical and design changes can occur at any time. Make sure that you always use the latest version of the data sheet.

WARRANTY NOTES

Please refer to our warranty conditions on:

<https://www.ledxon.de/en/guarantee/>

Further product data as well as current information can be found at www.ledxon.com